

# Zazy TV

## Software Installation Guide for MAG Device



## 1 Introduction

A MAG device is a set-up box that is used to stream IPTV service (e.g., Zazy TV). MAG devices include a built-in software that allows you to stream IPTV service without requiring to download any third-party apps such as the Android STB emulator.

All you will need is to ensure that your MAC address is registered to the Zazy TV server in order to install and stream Zazy TV service.

## 2 MAC Address Registration

To allow connection from your MAG device to the Zazy TV streaming service, we will require you to register your MAC address to the Zazy TV server.

1. You will find your dedicated MAC address underneath your MAG device as shown below:

*Example of MAG device*



2. On the Zazy TV order page, register your MAG device.

Zazy TV Portal order page

Additional Required Information

Select Product Type

MAG

MAG Address

00:1A:79:00:8

Format 00:1A:79:12:34:5A

Select Bouquets

Leave empty for all bouquets

Select Bouquets

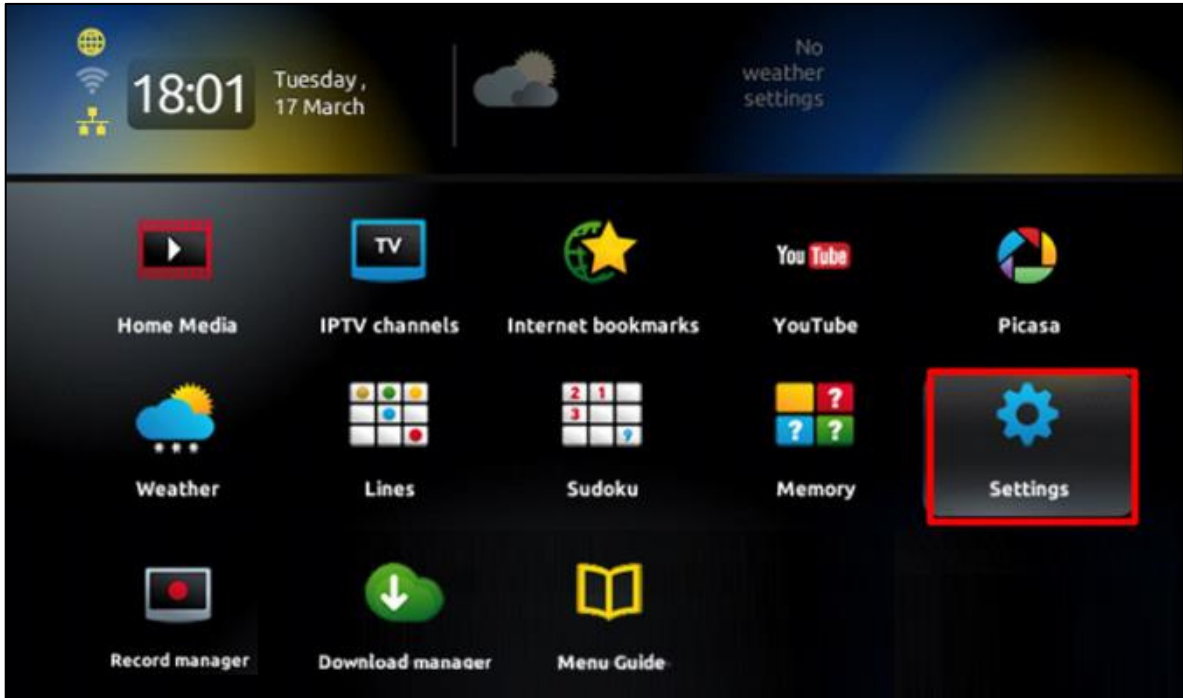
Continue →

Have questions? Contact our sales team for assistance. [Click here](#)

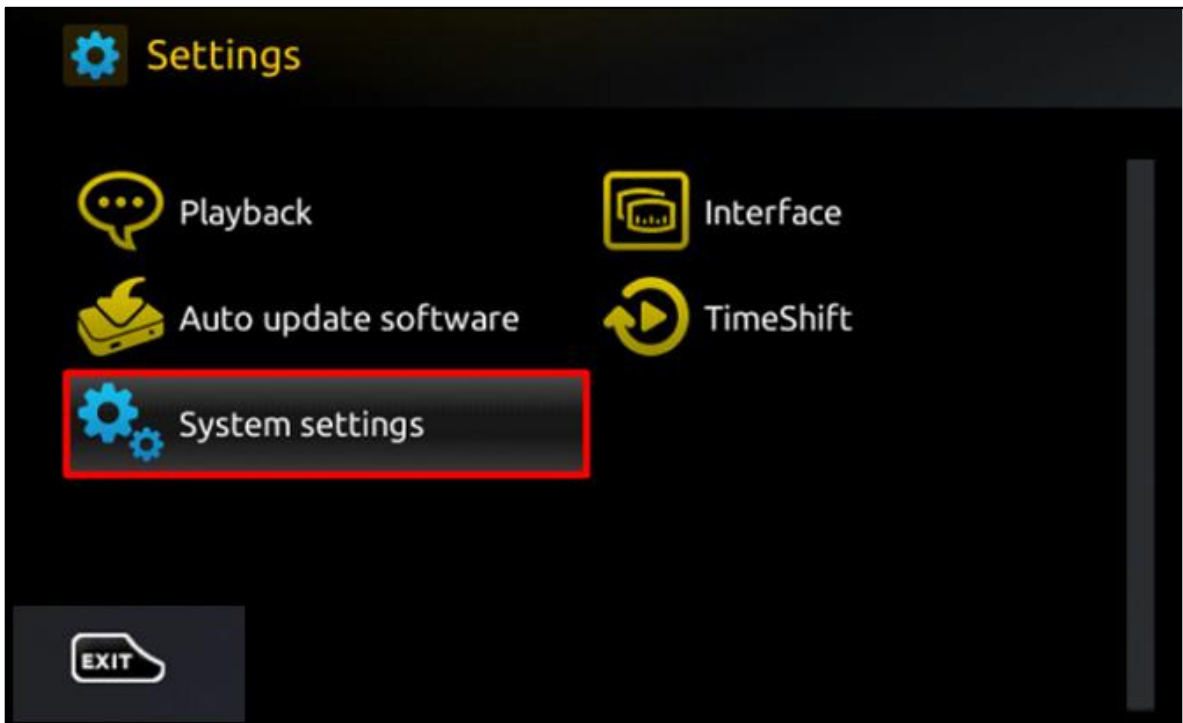
- a. Select **MAG** as the Product Type.
  - b. Enter your MAC Address on the MAG Address field.
  - c. Click **Select Bouquets** to select live channels and series within your subscription.
  - d. Click **Continue** to proceed.
3. Once you see the **Review & Checkout** page, click **Checkout** to proceed. You have now registered your MAG device within your subscription.

## 3 Zazy TV Installation

1. Turn on your MAG device, then go to **Settings**.



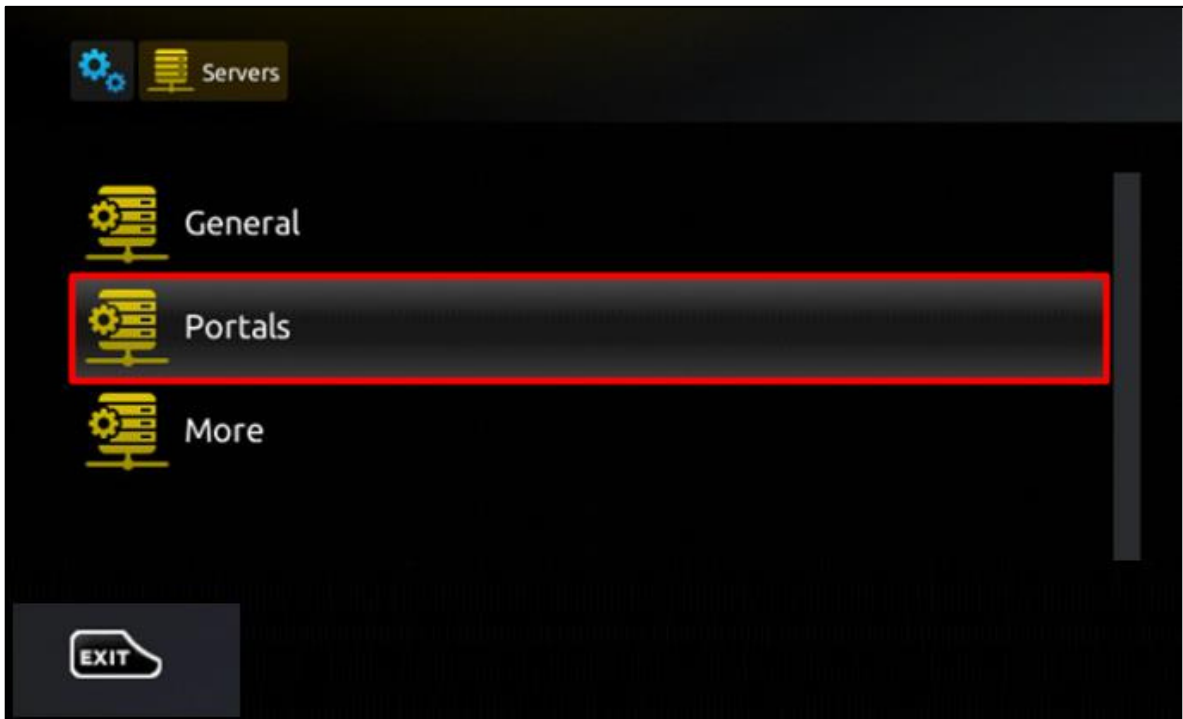
2. In the Settings menu, select **System settings**.



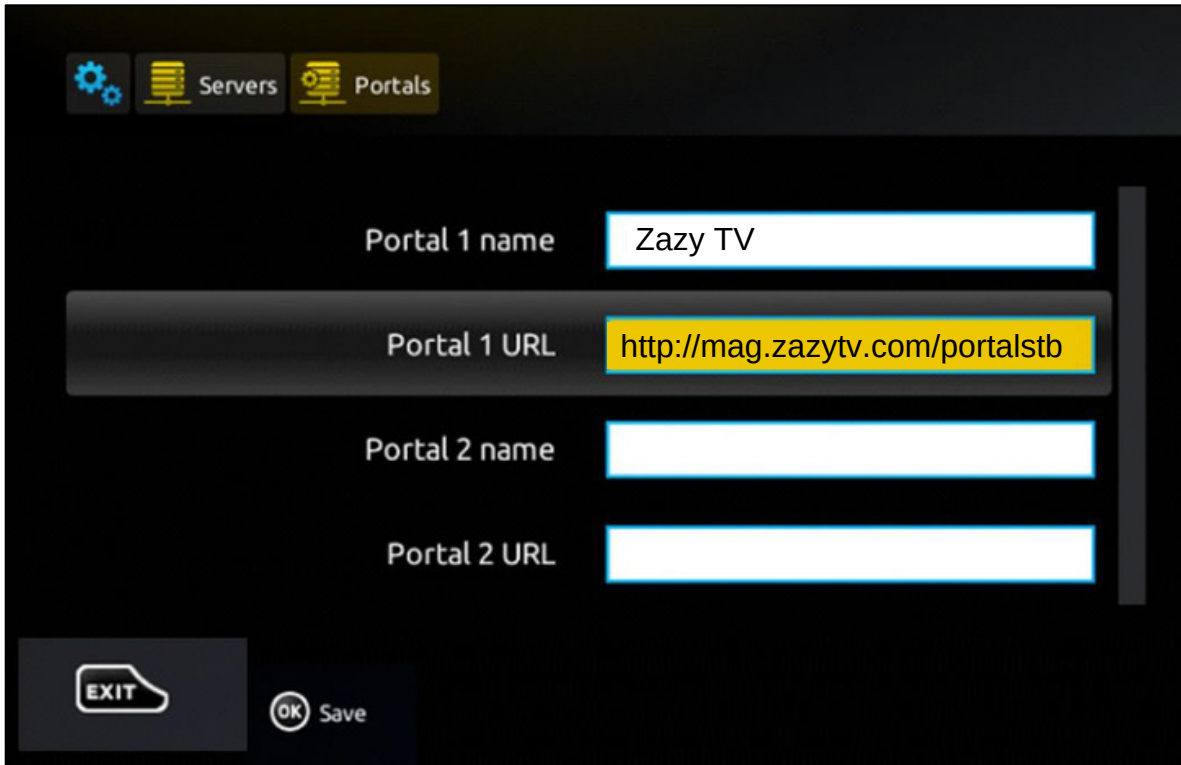
- Under System settings, select **Servers**.



- From the Servers menu, select **Portals**.



5. Fill in the following fields using the credentials provided to you via Zazy TV service provider.



The screenshot shows a configuration interface for 'Portals' on a dark background. At the top, there are three menu items: 'Settings' (gear icon), 'Servers' (server rack icon), and 'Portals' (server rack icon with a gear). Below the menu, there are four input fields:

- 'Portal 1 name' with the text 'Zazy TV' entered.
- 'Portal 1 URL' with the text 'http://mag.zazytv.com/portalstb' entered.
- 'Portal 2 name' with an empty field.
- 'Portal 2 URL' with an empty field.

At the bottom left, there is an 'EXIT' button with a cursor icon. At the bottom center, there is an 'OK Save' button with a circular 'OK' icon.

>

Enter “Zazy TV” in the **Portal 1 name** field.

>

Enter “http://mag.zazytv.com/portalstb” in the **Portal 1 URL** field.

After you have filled in the Portal fields, click **OK Save** to store the Portals settings.

You may now enjoy streaming Zazy TV channels, movies and series on your MAG device.

## 4 Contact Us

For inquiries or concerns about your reseller account, you may submit a support ticket to the link below:

<https://clients.zazytv.com/clientarea.php>